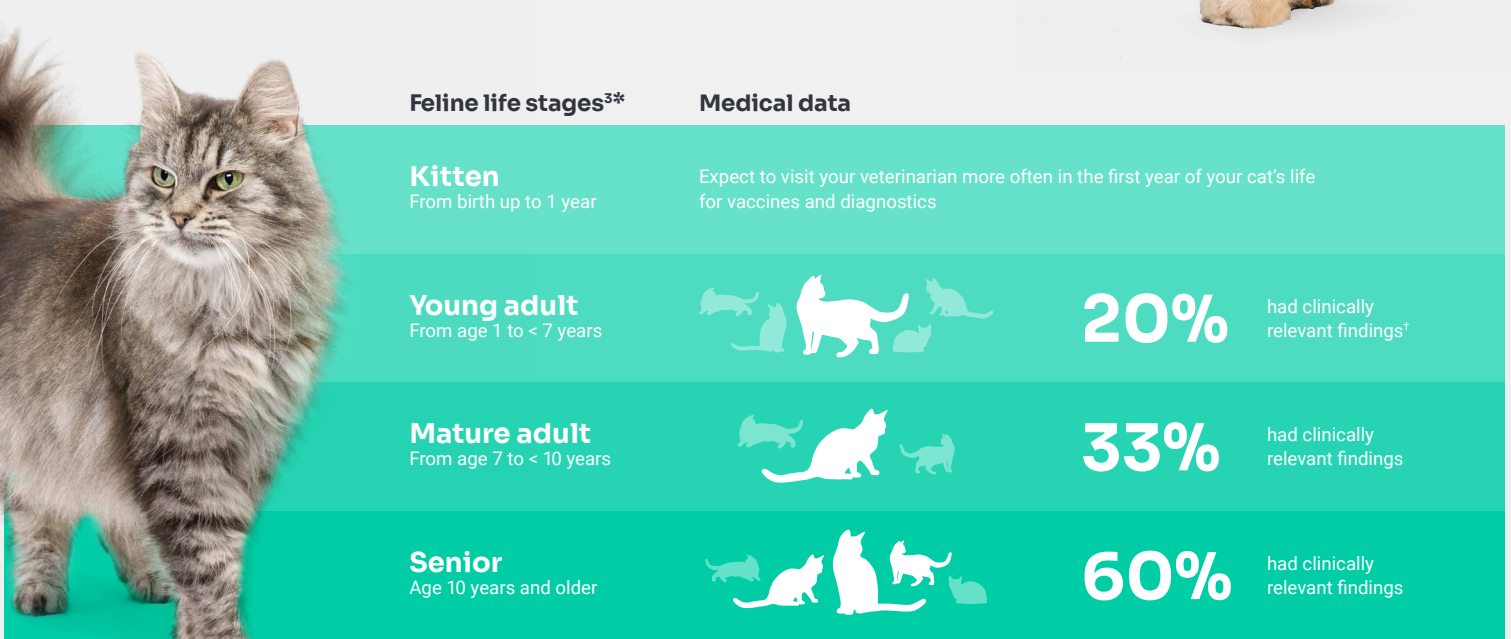
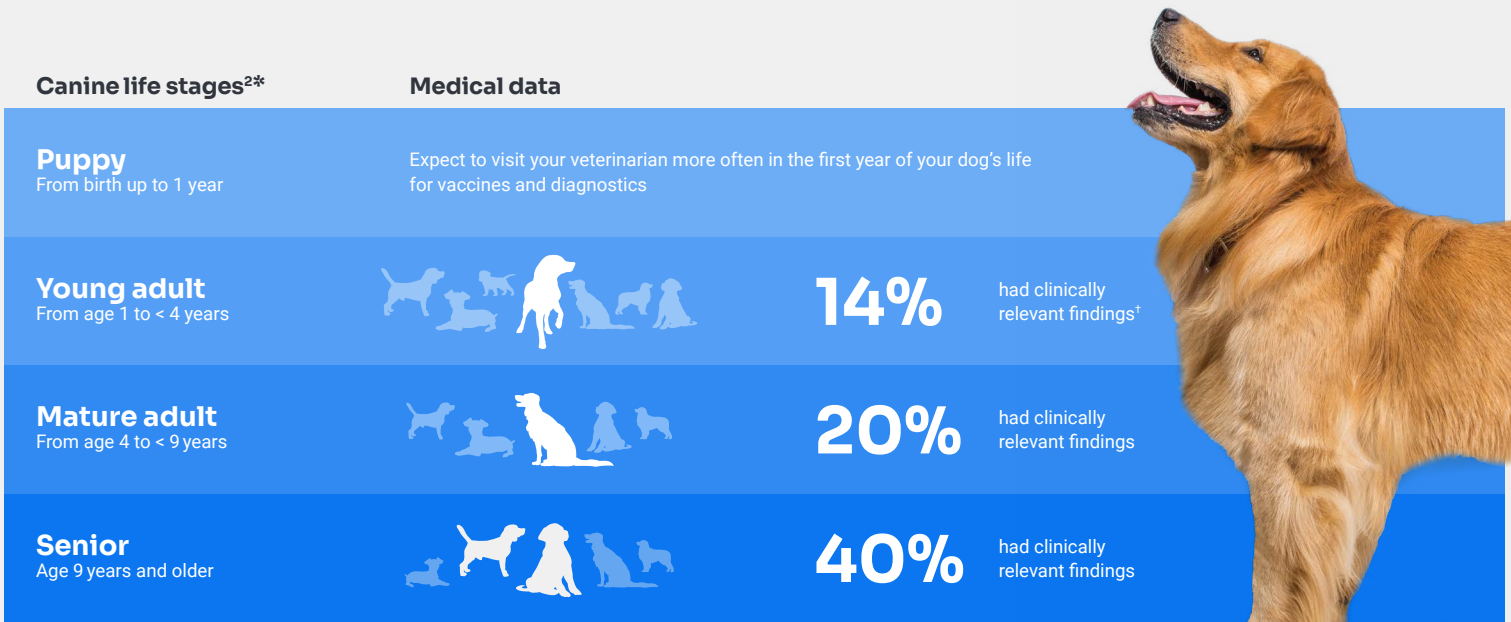


Pets of all ages can have underlying issues.

Recent research shows that regular testing can uncover potential issues in up to 40% of dogs and 60% of cats. Routine diagnostics can help establish a healthy baseline in your pet and uncover any potential health issues, at every stage of your pet's life.¹



Talk with your veterinarian about including diagnostic testing as part of your pet's regular visit. Tests may include a complete blood count, comprehensive chemistry profile, urinalysis and faecal testing.



Learn more about how your pet can benefit from wellness testing.

^{*}Age ranges for each life stage represent ranges assigned by IDEXX for the purpose of analyzing data from a recent IDEXX study.¹
[†]Clinically relevant findings are test results that indicate impact to organ systems or physiologic processes.

References

1. Source: Schooley E, Hegarty E, Michael H. Frequency of laboratory abnormalities in dogs and cats presenting to veterinary clinics in the United States for wellness visits. SSRN. Preprint posted online November 6, 2024. doi:10.2139/ssrn.5010477

2. Canine life stage definitions. American Animal Hospital Association. Accessed January 23, 2024. www.aaha.org/aaha-guidelines/life-stage-canine-2019/canine-life-stage-definitions

3. Feline life stage definitions. American Animal Hospital Association. Accessed January 23, 2024. www.aaha.org/aaha-guidelines/life-stage-feline-2021/feline-life-stage-definitions

© 2025 IDEXX Laboratories, Inc. All rights reserved. • 09-2690348-03
All ®/TM marks are owned by IDEXX Laboratories, Inc. or its affiliates in the United States and/or other countries. The IDEXX Privacy Policy is available at idexx.com.